

GOW-MAC[®]
INSTRUMENT CO.

Clarity Chromatography Station

Compatibility Table

	Clarity	Clarity Lite	Note
Windows 10 (32 and 64 bit)	INT7,INT9,U-PAD**,U-PAD2,Net-PAD,CB20**, Colibrick, Zebrick***	INT7,INT9,U-PAD**,U-PAD2, Colibrick	<i>From version 6.2</i>
Windows 8.1 (32 and 64 bit)	INT7,INT9,U-PAD**,U-PAD2,Net-PAD,CB20**, Colibrick, Zebrick***	INT7,INT9,U-PAD**,U-PAD2, Colibrick	<i>From version 4.0.4</i>
Windows 7 ^{SP1}	INT7,INT9,U-PAD2,Net-PAD,Colibrick*,Zebrick***	INT7,INT9,U-PAD2, Colibrick*	<i>From version 3.0</i>
Windows 7 ^{SP1} (32 bit)	INT7,INT9,U-PAD,U-PAD2,CB20,Net-PAD, Colibrick*,Zebrick***	INT7,INT9,U-PAD,U-PAD2, Colibrick*	<i>From version 2.8</i>

*Colibrick from version 4.0

**U-PAD and CB20 are supported only on 32-bit versions of Windows

***Zebrick supported from Clarity 7.0

-HW Key (dongle) required for all systems from version 2.4.0

-Clarity Installation may require a minimal Windows service pack version (SP) or update if specified

PC Configurations

	Minimal*	Recommended**
Windows 10,8.1,7 (32 bit, 64 bit)	PC Pentium4, 2 GB RAM	PC Pentium 4/2 GH; and newer, 4 GB RAM, SSD drive
Monitor	Resolution 1024x768 64K (16 bit High color)	Resolution 1280x1024 or 1680x1050 64K (16 bit High color)

*Minimal configuration is suitable for Clarity (Lite) configured with one Clarity Instrument running an analog acquisition using Colibrick A,D Converter

**Recommended PC requirements depend on number of Clarity Instruments and their configuration. For example running multiple Clarity Instruments simultaneously, using PDA, MS Extension and Agilent ICF control modules, pose higher demands on the processing power. Please contact us to consult PC configuration suitable for your instrumentation.

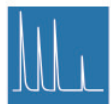
-USB port for the HW key

-USB port if installed from USB Installation media

-USB port for Colibrick or Zebrick

-Full size PCI slot (32 bit PCI slot for 5V 32 bits half-length extension card) for INT7,INT9 or CB20; low profile or PCI Express slots cannot be used

-LAN port for the Net-PAD



GOW-MAC[®]
INSTRUMENT CO.
Analytical instruments since 1935

ISO 9001:2015 CERTIFIED

Global Headquarters
GOW-MAC Instrument Co.
277 Brodhead Road
Bethlehem, PA 18017 U.S.A.
Tel: (610) 954-9000
Fax: (610) 954-0599
E-mail: sales@gow-mac.com
URL: www.gow-mac.com

Asian-Pacific Office
GOW-MAC Instrument Co. - Taiwan
3Fl. No. 33, Lane 92, Beida Road
Hsinchu City 300, Taiwan ROC
Tel: +886-3-5422845
Fax: +886-3-5422045
E-mail: jclo@gow-mac.com

China Office
GOW-MAC Instrument Co. - China
Beijing, China
Tel: + 86-13-501010846
E-mail: sales@gow-mac.com.cn
URL: www.gow-mac.com.cn

