

# ***Operating Manual***

---

## **Series 580 FID Isothermal Gas Chromatograph**

Series 580: 120 V, 50/60 Hz

Series 582: 230 V, 50/60 Hz

**March 2016**

Rev. 8

**READ INSTRUCTIONS  
BEFORE OPERATING**



PO Box 25444, Lehigh Valley, PA 18002-5444 U.S.A. Tel: (610) 954-9000



# Contents

<b>Section 1</b>	<b>Safety .....</b>	<b>7</b>
<b>Section 2</b>	<b>Specifications.....</b>	<b>9</b>
<b>Section 3</b>	<b>Installation .....</b>	<b>11</b>
<b>Section 4</b>	<b>Operating Controls .....</b>	<b>19</b>
<b>Section 5</b>	<b>Operation .....</b>	<b>23</b>
<b>Section 6</b>	<b>General Notes on FID Operation .....</b>	<b>29</b>
<b>Section 7</b>	<b>Maintenance &amp; Service .....</b>	<b>31</b>
<b>Section 8</b>	<b>Valving.....</b>	<b>35</b>
<b>Section 9</b>	<b>Capillary Chromatography .....</b>	<b>39</b>
<b>Section 10</b>	<b>Ruthenium Methanizer.....</b>	<b>43</b>
	<b>MATERIAL SAFETY DATA SHEET.....</b>	<b>46</b>
<b>Section 11</b>	<b>Troubleshooting Chromatographic Interpretations* .....</b>	<b>53</b>
<b>Section 12</b>	<b>Replacement Parts.....</b>	<b>61</b>
<b>Section 13</b>	<b>Drawings .....</b>	<b>63</b>



# Series 580 Flame Ionization Gas Chromatograph Operation & Maintenance Manual

This manual provides operating instructions and maintenance requirements for the Series 580 FID GC to permit safe and efficient use of your instrument. Throughout this manual, special “NOTE”, “CAUTION”, “WARNING” signs appear for your protection. It is important that you thoroughly read the appropriate sections of this manual before operating your instrument. Operate the SERIES 580 FID according to these instructions. Any questions concerning the safe and proper use of your instrument should be addressed to:

GOW-MAC Instrument Co.  
277 Brodhead Road  
Bethlehem, PA 18017  
Tel: (610) 954-9000  
Fax: (610) 954-0599  
E-mail: [sales@gow-mac.com](mailto:sales@gow-mac.com)  
URL: [www.gow-mac.com](http://www.gow-mac.com)



# Section 1

## Safety

This section is designed to bring special attention to specific areas or practices that may pose particular hazards to personnel and/or equipment safety only. For complete installation instructions, see Section 3.

It is in the operator's best interest to read this section to ensure the safe operation of the equipment.

### A. BURN HAZARDS

The injection ports, columns, and column oven cover may reach very high temperatures, and remain hot for several hours after the instrument has been shutdown. To prevent painful burns resulting from contact with the hot surfaces, wear protective gloves.

### B. ELECTRICAL HAZARDS

1. DISCONNECT the instrument from all power sources before removing front, side, and back panels and exposing potentially dangerous voltages.
2. Make sure that the actual line voltage is the value for which the instrument was designed. (for properly grounded outlet ONLY.)
3. DO NOT overload the ac outlet with other electrical equipment.
4. Adhere to the color coding descriptions when hooking up electrical connections.
5. Repair or replace faulty or frayed wiring.

### C. COMPRESSED GAS CYLINDERS

Compressed gas cylinders are potential sources of serious accidents, injuries, and even death if proper precautions and safety practices are not followed. Therefore, during handling and use of these gases, be certain to use applicable safety precautions described by your compressed gas supplier, the Compressed Gas Association, and/or O.S.H.A. regulations.

1. Read the label on all cylinders **BEFORE** using to identify the cylinder contents. If the label is illegible, return the cylinder to the supplier. **DO NOT ASSUME THE CONTENTS.**
2. All gas cylinders in use and in storage **MUST** be properly secured to an immovable structure to prevent accidental falling or movement. Read all relevant safety codes.
3. Store or move cylinders **ONLY** in the vertical position.
4. **DO NOT** move or transport cylinders with regulators attached or without safety cap secured over the valve system.
5. Store cylinders in a well ventilated area away from heat or ignition sources.

6. When installing tubing, provide ONLY proper pressure reducing regulators and pressure relief devices to prevent overpressure of tubing and equipment.

#### D. GENERAL

1. Perform periodic leak checks on all fittings.
2. Store organic solvents away from the GC in fireproof, vented, labelled cabinets.
3. DO NOT allow flammable and/or toxic wastes to accumulate.
4. Keep combustibles away from gas cylinders and eliminate ignition sources.
5. DO NOT place papers, charts, samples, etc. on top of the GC.
6. Maintain adequate ventilation.
7. Dispose of wastes properly.



## Section 2 Specifications

The GOW-MAC Series 580 FID is a rugged, compact flame ionization detector (FID) gas chromatograph designed for high sensitivity performance. It is a single column, single detector unit for isothermal operation.

The right section of the chromatograph houses the electronics necessary for proper operation of the instrument. Control of the Series 580 is accomplished by solid-state temperature controllers with digital (LED) meter readout.

The center section of the chromatograph houses the columns, the FID, the injection port, and the flow system. The design of the oven enables the installation of optional accessories including a methanizer and/or capillary column.

The left section (optional) of the chromatograph houses any valves or other options you may have ordered.

### OVERALL:

H 12 1/2" (317 mm)

W 19 1/2" (495 mm) width varies due to various housings used and the options ordered.

D 18" (457 mm)

Net weight: 70 lbs. (31.75 kg)

Shipping: 80 lbs (37.50 kg)

### POWER REQUIREMENTS:

Series 580: 115 VAC, 60 Hz Series 582: 230 VAC, 50 Hz

Fuse: Series 580: 10 amps

Series 582: 5 amps

### COLUMN OVEN:

H 7 1/2" (190 mm) W 10" (254 mm) D 8 1/2" (216 mm)

Temperature Range: ambient to 400 °C

Temperature Readout: 3 1/2 digit LED digital meter

Temperature Control: solid state time proportioning, RTD sensors, direct reading, ambient to 400 °C

Column Oven Temperature Protection Circuit: shuts the column oven off if the temperature rises to 30 °C over the set point.

Oven Fittings: accommodates 1/8" or 1/4" o.d. metal, 6 mm glass, or capillary columns.

Oven Capacity: can accommodate up to 30' of 1/8" columns

### DETECTOR OVEN:

Temperature Settings: ambient to 400 °C

Temperature Readout: 3 1/2 digit LED digital meter

Temperature Control: solid state time proportioning, RTD sensors, direct reading, ambient to 400 °C

#### DETECTOR:

Detector Type: flame ionization  
Design: forced air, diffusion  
Linearity:  $1 \times 10^6$   
Carrier Gas: N<sub>2</sub>, He, or H<sub>2</sub>  
Temperature Range: ambient to 400 °C  
Sensitivity:  $1 \times 10^{-12}$  g/sec hydrocarbon

#### INJECTION PORT:

Septum: standard 9 mm  
Temperature Control: solid state time proportioning, RTD sensors, direct reading, ambient to 400 °C  
Temperature Readout: 3 1/2 digit LED digital meter  
Injection Method: direct on-column or gas sample valves

#### GAS FLOW (conditions may vary depending upon the options chosen for your instruments)

Single column with single injection port and exit  
One metering valve for control of the column

#### ELECTROMETER AMPLIFIER

Circuit: Monolithic FET input operational amplifier powered by a dual polarity tracking regulator to provide balanced positive and negative voltage to the amplifier.

Sensitivity:  $1.5 \times 10^{-12}$  A, full scale 1 mV recorder

Dynamic Range:  $1 \times 10^6$

Noise: with cable  $\pm 3 \mu\text{V}$  at maximum sensitivity

Drift: less than  $2 \mu\text{V/hr}$  under controlled environmental conditions Input

Ranges:  $10^{-9}$ ,  $10^{-10}$ ,  $10^{-11}$ ,  $10^{-12}$  A/mV

Output Ranges: binary , 1 to 1024 plus infinity ( $\infty$ )

# Section 3 Installation

## A. GENERAL

The customer should read and become familiar with this section before proceeding with the installation of the SERIES 580 FID GC.

## B. ADDITIONAL EQUIPMENT REQUIRED

1. Use GOW-MAC Part No. 59-500 Installation Kit for Regulator hookup or 1/8" copper tubing and Swagelok® or equal compression fittings.

### Pressure Regulators

Use high purity 2-stage regulators on gas cylinders installed to provide instrument carrier and/or detector gases (the first stage indicates cylinder pressure and the second adjustable stage controls delivery pressure to the instrument). Regulators should have non-contaminating metal diaphragms and a shut-off valve. The following table lists 2-stage regulators with shut-off valve and a brass 1/8 inch compression outlet connection that are suitable for an 580 FID installation:

GOW-MAC Part Number	CGA cylinder connection	Gas
180-514-3	580	helium, argon
180-515-1	350	hydrogen
180-354	590	air

2. Carrier Gas Cylinder: cylinder should be equipped with a regulator and rotameter\*\* terminating in a 1/8" fitting.
3. Hydrogen cylinder with regulator, needle valve, and rotameter\*\*.
4. Air cylinder with regulator, needle valve, and rotameter\*\*.
5. Potentiometric recorder with 1 mV span, 1 sec. response, or 10 mV span. mV INPUT MUST NOT BE GROUNDED. A computing integrator or chromatography software may also be used.
6. Gas flows; i.e., H<sub>2</sub>, Air, and carrier, can be measured using a rotameter assembly and a digital or bubble-type flow meter.



NOTE

***FID gas flows cannot be measured at the FID chimney vent!***

7. AC power source: Series 580: 1100 W at 115 V, 60 Hz  
Series 582: 550 W at 230 V, 50 Hz

\*\* Rotameter and Needle Valve Assembly is available from GOW-MAC P/N 75-300-HE (Helium) or P/N 75-300-N<sub>2</sub> (Nitrogen)



---

**OPERATING INSTRUCTIONS FOR BOTH MODELS ARE THE SAME, EXCEPT FOR LINE VOLTAGE REQUIREMENTS. TO PREVENT DAMAGE TO THE INSTRUMENT, MAKE SURE THAT THE AC ELECTRICAL OUTLET IS THE CORRECT VOLTAGE FOR YOUR INSTRUMENT BEFORE PLUGGING IT INTO THE OUTLET.**

---

8. Column suitable for your application.

#### C. UNPACKING-INSPECTION

1. When unpacking the instrument, check it carefully for evidence of shipping damage or rough handling. Check to ensure that all components ordered have either been supplied or back-ordered. Notify the Company of any discrepancies. The packing box should be retained for use if the instrument needs to be returned to the factory for repair or modification. GOW-MAC does not supply field service. ALL repairs are made at Bethlehem, PA USA or by an authorized representative.
2. Remove all plastic and/or paper shipping caps and restraints before operating.
3. Fill out and mail the yellow WARRANTY-REGISTRATION CARD (included with this manual) to ensure that the warranty will be validated and that you will be kept informed of any improvements or other items of interest.

#### D. LOCATION

1. The SERIES 580 FID should be placed in a location that is secure, vibration-free, protected from abrupt temperature changes (operating ambient temperature range is 15 °C - 40 °C), and drafts. Such changes may upset the temperature stability in the course of an analysis or preparation.
2. Enough adjacent tabletop space should be allowed for the installation of recorders, integrators, computers, etc. Allow sufficient space on all sides of the GC for easy access.
3. Make sure that there is adequate space for the installation of the gas cylinders. Cylinders should be securely fastened to the wall or table per CGA and/or OSHA regulations.



---

**READ "SECTION 1 - SAFETY" TO ENSURE PROPER HANDLING OF GAS CYLINDERS.**

---

4. An electrical outlet (ac) should be near the location where the GC is to be installed. If the outlet is not a 3-pin type, make sure that a good ground connection is available, since a good ground is necessary for proper operation. The ac outlet should be connected to a circuit that is not heavily loaded with other electrical equipment because input voltage to the instrument should be steady for optimum operating stability.

If the ac line voltage varies, consideration should be given to the installation of a stabilizing transformer at the ac outlet.



---

***Both recorder and the Series 580 GC should be connected to the same duplex service outlet to prevent ground loops.***

---

#### E. Power Requirements

The Series 580 GC requires a 115 volt/60 Hz power source capable of providing up to 10 amps. The ac power cord is terminated with a straight-blade 3-prong plug rated for 15 amp service that requires a matching receptacle.

The Series 582 GC requires a 230 volt/50 Hz power source capable of providing up to 5 amps. The ac power cord is terminated with a straight-blade 3-prong plug rated for 10 amp service that requires a matching receptacle.



---

***MAKE SURE ALL SWITCHES ON FRONT AND BACK OF THE SERIES 580 GC ARE IN THE "OFF" POSITION BEFORE PLUGGING IN THE INSTRUMENT.***

***DO NOT PLUG THE INSTRUMENT IN AT THIS TIME!***

---

#### F. Recorder Connection

Supplied with your GC is a recorder cable. Both ends of the cable terminate in three spade terminals.

Cable color code is as follows: Red lead, positive (+); black lead, negative (-), silver (shielded) lead, ground.

1. Connect one end of the recorder cable to the terminals located at the rear of the GC (Figure 3-1). Connection should be made as follows:

Black to black  
Red to red  
Silver to green

2. Connect the other end of the recorder cable to the proper terminals on the recorder.
3. A floating input must be provided at the recorder.

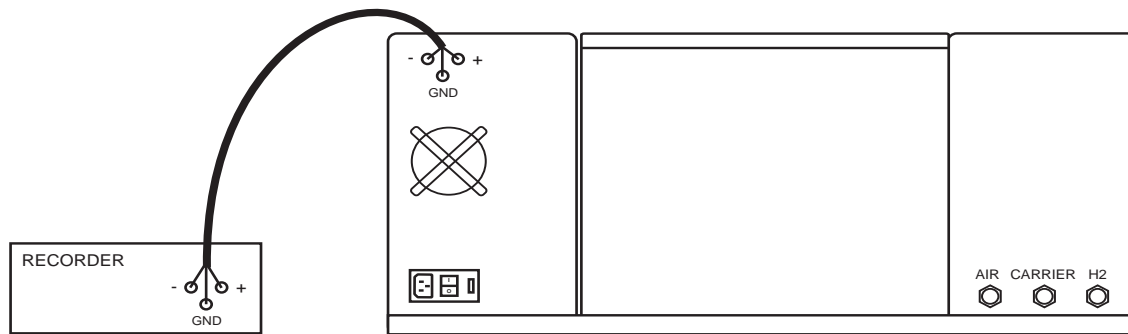


Figure 3-1 (For illustrative purpose only. Instruments may vary.)



NOTE

***The shielded ground wire should be connected to the proper terminal on the recorder, if provided. Follow the recorder manufacturer's instructions for grounding the recorder.***

#### G. COMPUTING INTEGRATOR CONNECTIONS

The same cable referred to above can be used for connecting an integrator to the GC.

#### H. GAS CONNECTIONS

1. The flame ionization detector requires the following gases:

Hydrogen (He) for the FID — Zero Grade (99.995%)

Instrument Air for the FID — Zero Grade (99.995%)

Helium (He), Nitrogen (N<sub>2</sub>) for Carrier Gas — Zero Grade (99.995%)

Each cylinder must be equipped with a two stage regulator.

All tubing connections for the carrier gas, hydrogen, and air are 1/8" o.d. While plastic or synthetic tubing may be used for the carrier and air, in the interest of safety, metal tubing should be used for the hydrogen. Either by using the GOW-MAC Installation Kit (part no. 59-400) or fittings and copper tubing of your own, connect 1/8" o.d. pieces of clean tubing from the gas cylinders to their respective inlets (Figure 3-2). High quality nuts and ferrules may be used for column connection. Swagelok® or equal compression fittings are recommended.

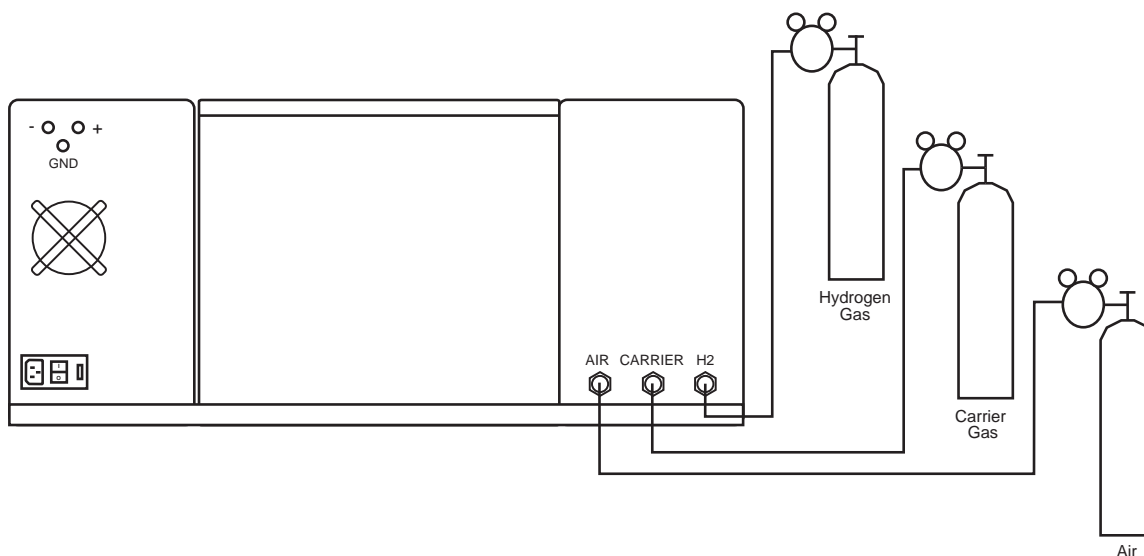


Figure 3-2 (For illustrative purpose only. Instruments may vary.)

To prevent contamination of your GC by grease, oil, or chemical residue, the following procedure should be followed for purging additional stainless steel or copper tubing **PRIOR** to connecting it to the Series 580 FID GC.

- a. Clean tubing by flushing with acetone to remove any oil residue that may be present .
- b. After washing, let tubing drain and dry.

2. All lines and tubing should be clean and free from moisture.

#### I. FLOW ADJUSTMENT FOR CARRIER GAS



***MAKE SURE INSTRUMENT SERVICE CORD IS NOT PLUGGED INTO AC POWER SOURCE.***

Helium (He) or Nitrogen (N<sub>2</sub>) may be used for carrier gas. Use the carrier gas for which the rotameter was calibrated.

1. Set secondary stage of pressure regulator on cylinder to 40 psig.
2. Carrier gas flow is controlled by the needle valve located on the front panel under the column.
3. Adjust carrier gas flow to 20-30 mL/min. using the needle valve.

#### J. FLOW ADJUSTMENT FOR AIR

Adjust air flow in the FID to 250-300 mL/min. using the knob on the Air rotameter. Use the GOW-MAC 180-567 Digital Flowmeter to check the air flow.

## K. FLOW ADJUSTMENT FOR HYDROGEN



---

**HYDROGEN IS AN EXTREMELY EXPLOSIVE GAS! MAKE SURE THAT ALL CIGARETTES, CIGARS, MATCHES, ETC. ARE EXTINGUISHED BEFORE TURNING HYDROGEN "ON"!**

---

Adjust hydrogen flow to 50 mL/min. to initially purge the system and to make ignition of the FID easier— then reduce to the optimum flow rate of 30 mL/min. (0.0636 SCFH). Use the GOW-MAC 180-567 Digital Flowmeter to check the hydrogen flow.



---

**DO NOT IGNITE THE FID AT THIS TIME. THIS STEP COMES LATER.**

---

## L. LEAK CHECK

After all connections have been made, it is important that they be tight and free from leaks. Leaks in the carrier gas system (particularly in the septum or column connections) will cause base line drift, noise, and may reduce sensitivity. Leaks in the air system are not as serious, but may cause erratic performance. Leaks in the hydrogen system are **HAZARDOUS!!**



---

**HYDROGEN IS AN EXTREMELY EXPLOSIVE GAS!**

---

The lower explosive limit (LEL) of hydrogen with air is 4.0% and the upper explosive limit (UEL) of hydrogen in air is 75%. When oxygen is used the LEL remains the same but the UEL increases to 94%. Care must be exercised in handling this gas. The hydrogen should be turned "OFF" when not in use. The instrument should not be left unattended until the flame has been ignited and the operator is assured that FLAME OUT will not occur.

This instrument has been leak-tested prior to shipment. It is possible, but highly unlikely, that leaks may have developed during shipping. The most likely sources of leaks will be in subsequent connections or re-connections made by the user.



---

**A LEAK CHECK SHOULD BE MADE OF THE ENTIRE GC SYSTEM PRIOR TO INSTRUMENT OPERATION. AND WHENEVER FLOW SYSTEM IS BROKEN. POWER TO THE INSTRUMENT IS TO REMAIN "OFF" THROUGHOUT THIS PROCEDURE!**

---

1. Open the hinged COLUMN OVEN LID.



2. Check all column connections for tightness.

The column supplied with this GC is a test column: 4' x 1/8" stainless steel, packed with Molecular Sieve 5A, 80/100 mesh and requires a 9/16" open-end wrench for tightening or removal.

Columns ordered by customer will vary and may or may not be installed at the factory depending on the customer's instructions at time of order.

3. Check septum nut located on the front panel for tightness (should be finger tight).
4. Check the carrier gas connection at the back of the GC for tightness.
5. Check the hydrogen gas connection at the back of the GC for tightness.
6. Check the air connection at the back of the GC for tightness.
7. Check all connections at the gas cylinders for tightness.
8. The easiest way to locate leaks in the system is through the use of either a GOW-MAC Gas Leak Detector Model 21-070. If a leak detector is not available, the use of a leak testing solution (soap solution) and checking for bubbles may be used.



NOTE

---

***Leak checks should be run periodically and are a MUST when a new column or gas connection is made.***

---



## Section 4

# Operating Controls

This section of the manual will introduce you to the controls of your Series 580 FID GC.

### A. Controls

With the exception of the MAIN POWER SWITCH (located on the rear panel), all of the operating controls are located on the right front panel of the GC. The operator should become familiar with these controls and their functions BEFORE operating the instrument. Refer to Figure 4-1.

1. DIGITAL PANEL METER: Displays the value of the operating function chosen by the SELECTION BUTTONS.
2. SELECTOR BUTTONS:
  - a. COLUMN OVEN TEMPERATURE (° C): Selects column temperature reading to appear on the DIGITAL PANEL METER.
  - b. DETECTOR TEMPERATURE (° C): Selects detector temperature reading to appear on the DIGITAL PANEL METER.
  - c. INJECTION PORT TEMPERATURE (° C): Selects injection port temperature reading to appear on the DIGITAL PANEL METER.
  - d. SET (IN)/ACTUAL (OUT): Selects either actual or set-point parameters for any of the above functions (a-c). This button should be left in the "ACTUAL" (OUT) position EXCEPT when settings are being changed.
3. COLUMN TEMPERATURE CONTROL: Selects the temperature of the column oven. Temperature is indicated on the DIGITAL PANEL METER when the COLUMN TEMP. BUTTON is depressed. (See "2d" above). Knob is "locking type". Push locking ring "IN" to turn knob.
4. DETECTOR TEMPERATURE CONTROL: Selects the temperature of the detector oven. Temperature is indicated on the DIGITAL PANEL METER when the DET. TEMP. BUTTON is pressed. (See "2d" above). Knob is "locking type". Push locking ring "IN" to turn knob.
5. INJECTION PORT TEMPERATURE CONTROL: Selects the temperature of the injection port. Temperature is indicated on the DIGITAL PANEL METER when the INJ. PORT. TEMP. BUTTON is pressed. (See "2d" above). Knob is "locking type". Push locking ring "IN" to turn knob.
6. IGNITOR BUTTON: This button operates the igniter on the FID. When pushed and the hydrogen and air are flowing, a glowing hot wire ignites the hydrogen inside the FID.
7. COARSE AND FINE ZERO CONTROLS: Adjusts the signal to establish the baseline on the recorder.

8. COLUMN HEATER AND FAN ON SWITCH: Controls the column oven heater and fan. The heater will operate only when the switch is in the "UP" position. This is the normal operating position. For rapid cooling of the oven, the heater may be turned "OFF" and the fan operated alone by placing the switch in the "FAN ONLY" position.
9. FLAME-OUT INDICATOR LIGHT: Illuminates when flame is not ignited. (optional)
10. FLAME-ON INDICATOR LIGHT: Illuminates when flame is lit. (optional)
11. RANGE SWITCH: Adjusts the amplification of the electrometer by a factor of 10. Four steps are provided from  $10^{-9}$  to  $10^{-12}$  amperes.



---

***A change of range using the RANGE SWITCH can cause activation of the Flame Out Circuit (indicated by loss of signal and illumination of the red Flame Out Indicator Light).***

***Relighting the flame can be done immediately by switching to Flame Out Bypass and simultaneously pushing the Ignitor Switch.***

---

12. ATTENUATOR: Attenuates the output of the electrometer, steps are binary from 1x to 1024 plus infinity ( $\infty$ ). The range switch should be set at the proper sensitivity so that the signal remains on scale on the recorder.
13. FLAME-OUT MODEL SWITCH (optional): The Flame Out Circuit detects the presence of the ionization current flow (only present when flame is lit). When the ionization current is not present (FLAME OUT), the circuit automatically deactivates the FUEL solenoid valve.
  - a. By-Pass Mode: Overrides fail-safe circuitry thereby allowing FUEL to pass through the system enabling ignition of the FID flame.
  - b. Operate Mode: Activates fail-safe circuit. To be engaged after the FID flame has stabilized. If the flame is accidentally extinguished, the "FAIL-SAFE" circuit will sense "flame-out" by an absence of ionization current, thereby closing the FUEL solenoid valve.
14. INJECTION PORT
15. METERING VALVE: Adjusts the flow of the carrier gas to the detector.
16. OVEN LID

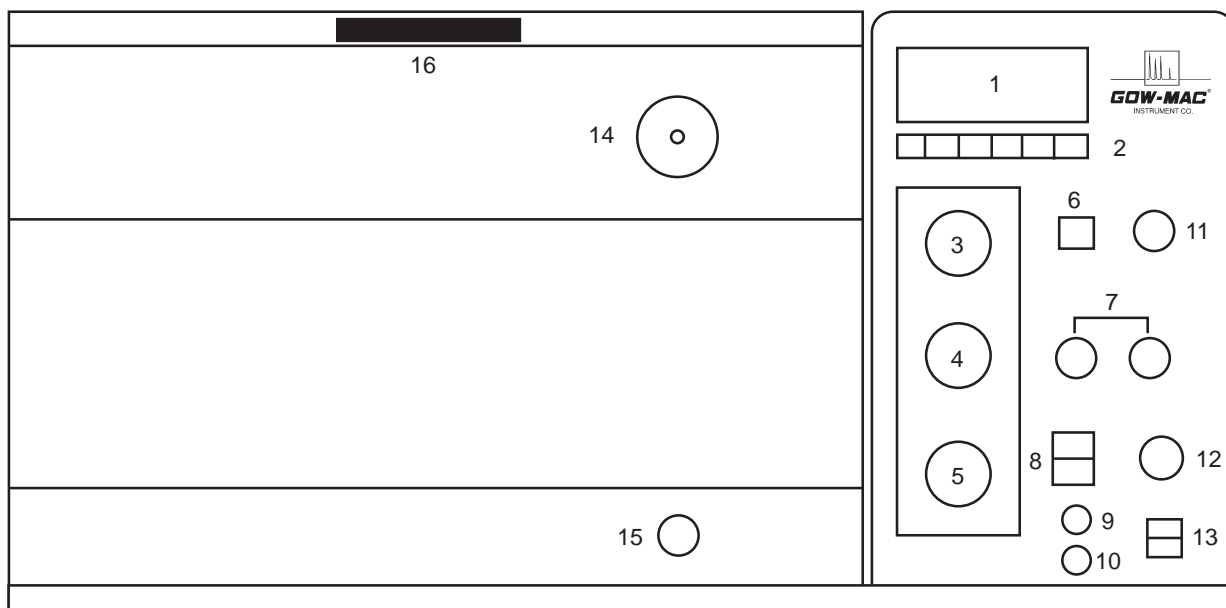


Figure 4-1 (For illustrative purpose only. Instruments may vary.)

- |                                  |   |
|----------------------------------|---|
| 1. Digital Panel Meter           | 9. Flame-out Indicator Light (optional) |
| 2. Selector Buttons              | 10. Flame-on Indicator Light (optional) |
| 3. Column Temperature Control    | 11. Range Switch                        |
| 4. Detector Temperature Control  | 12. Attenuator                          |
| 5. Injection Port Temp. Control  | 13. Flame-Out Mode Switch (optional)    |
| 6. Igniter Button                | 14. Injection Port                      |
| 7. Coarse/Fine zero              | 15. Metering Valve                      |
| 8. Column Heater & Fan On Switch | 16. Oven Lid                            |

#### B. Power and Recorder Connections (refer to Figure 3-1)

1. **Power Switch with Fuse:** This protects the entire instrument from AC voltage malfunctions. Should power fail to remain ON, remove power cord from AC outlet and check for shorted fuse.
2. **Service Cord:** DO NOT PLUG IN INSTRUMENT AT THIS TIME. This power cord should be plugged into a grounded receptacle. If grounded receptacle is not available, use a three two adapter but make sure that the ground lead is attached to the screw on the receptacle plate.
3. **Recorder:** A cable is supplied to connect the recorder to the instrument. Refer to Section 3F.

#### C. Column

The Series 580 FID GC is complete with two Swagelok® fittings for an 1/4" o.d. column, or an 1/8" o.d. column with 1/4" ends can be ordered from GOW-MAC. One-fourth (1/4") to one-eighth (1/8") adapters may also be purchased from GOW-MAC.

The oven is designed to accept twenty-four (24) feet of 1/4" column tubing, using 6 1/4" mandrel. Correspondingly longer lengths of 1/8" tubing can be wound on a mandrel of 4" o.d. diameter (a standard 1 lb. coffee can is about 4" in diameter). Figure 4 illustrates the column supplied with your instrument.



NOTE

---

***Special columns are normally not supplied conditioned, ready for use. Proper column conditioning procedures should be observed before analysis can be performed. Care should be taken during conditioning so contamination of the detector does not occur.***

---

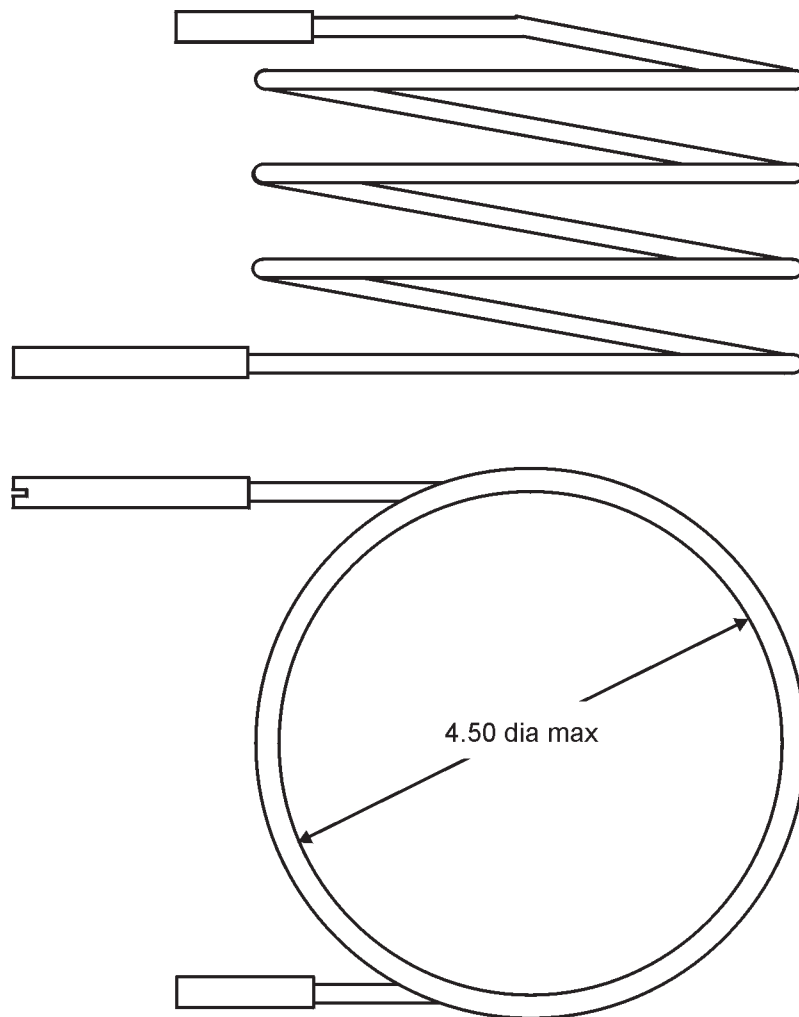


Figure 4-2

# Section 5 Operation

## A. GENERAL

The chromatographer should be familiar with the techniques of chromatography, the functions of all instrument controls, the operation of the recorder, and the characteristics of the column used prior to running samples.

## B. INITIAL OPERATION

### 1. Carrier Gas Flow Adjustment (Refer to Section 3, I)

- a. Make sure that ALL switches are in the "OFF" position.
- b. Set the Helium or Nitrogen carrier gas flowing with the secondary stage regulator on the gas cylinder reading 40 psig.
- c. Adjust the carrier gas flow to 20-30 mL/min. using the NEEDLE (METERING) VALVE located on the front control panel. The needle valve is closed when it is turned fully clockwise (CW). Some instruments control the flow using a rotameter located on the front of the Accessory housing. Refer to the flow diagram for the location of the carrier flow control.
- d. Check for leaks as described in Section 3, L.
- e. Allow 10 minutes to purge the system before turning power on to the instrument.

### 2. Warm-Up

- a. Plug the instrument into the appropriate ac outlet and turn instrument "ON".
- b. Set DETECTOR TEMPERATURE to desired setting (e.g. 210 °C).



NOTE

---

***Allow detector oven to reach temperature selected BEFORE turning on injection or column ovens. The detector should be maintained at the highest temperature component of the system to avoid condensation and possible contamination of the flame tip.***

---

- c. Set desired COLUMN TEMPERATURE and INJECTION PORT TEMPERATURE.



---

***DO NOT HEAT COLUMN ABOVE UPPER TEMPERATURE LIMIT OF COLUMN LIQUID PHASE. IF INSTRUMENT IS EQUIPPED WITH VALVES, DO NOT HEAT ABOVE 275 °C.***

---

- d. Allow adequate time for the injector and column ovens to reach set temperatures and all temperature-controlled zones have stabilized.

### 3. Flow Adjustments For Hydrogen & Air

- a. Adjust the hydrogen and air flows as described below:

i. Air

Adjust air flow to 300 mL/min. using the knob on the AIR Rotameter.

ii. Hydrogen

Hydrogen flow can be set to 50 mL/min. by adjusting the knob on the HYDROGEN Rotameter. This creates a hydrogen rich flame. Once the flame is ignited, decrease the hydrogen flow to 30 mL/min. for operation.

<b>Recommended operation flows</b>	
Carrier	30 mL/min.
Air	300 mL/min.
H <sub>2</sub>	30 mL/min.



---

**DO NOT LEAVE THE HYDROGEN FLOWING FOR MORE THAN 3 MINUTES WITHOUT IGNITION\*. READ REMAINDER OF INSTRUCTIONS BEFORE TURNING HYDROGEN ON.**

---

*\* May be longer on initial start up.*

- b. For instruments equipped with a Methanizer, refer to Section 10 for a complete description of Methanizer operation.

### 4. Flame Ignition

- a. Igniter

Heating the FID to operating temperature above 100 °C is recommended before igniting the flame in order to minimize water condensation in the detector. When ready to ignite the flame, initiate the flows of air and hydrogen to the FID. Press the IGNITER switch on the control section front panel. The hot wire igniter remains energized only as long as the IGNITER switch is pressed.



---

**FLAME DETECTION CIRCUIT: In instruments with the flame detection circuit installed, the FLAME OUT MODE momentary switch must be held in the BYPASS position to allow the flow of hydrogen to the detector. Upon successful ignition, the circuit detects the flame, the FLAME ON indicator light illuminates, and the fuel shut-off valve remains open. The BYPASS switch can be released when the FLAME ON light is illuminated.**

---



Ignition is indicated by a slight “pop” sound along with a sharp step increase in instrument signal. Conversely, a transient spike in signal indicates momentary combustion in the detector, but not the desired steady flame. Condensation is a secondary method of confirming the presence of a flame. Hold a smooth glass or mirror to the FID chimney vent to catch and observe condensation.

- i. If the flame fails to ignite all flows should be rechecked.
- ii. If flows have been checked and the flame still fails to ignite, air and/or carrier gas flows may need to be reduced in order to concentrate the hydrogen and facilitate the ignition of the flame. After ignition, readjust the flows.
- iii. **DO NOT LEAVE THE HYDROGEN ON FOR LONG PERIODS OF TIME WITHOUT IGNITION AND CONTINUOUS COMBUSTION.**
- iv. The purity of the air, hydrogen and carrier gas will have an effect on baseline drift and noise.

#### 5. Strip Chart Recorder Zeroing

The Series 580 FID GC is suitable for use with almost any strip chart recorder of the potentiometric type having a 1 mV full-scale span. An adjustable chart drive is also recommended: 40, 20, 10, 4, 2, 1 cm/min. and hour.

After the recorder is properly connected to the GC, it may be turned “ON”. At this time the recorder zero should be established using the RANGE and COARSE & FINE ZERO CONTROLS. Proceed as follows:

- a. Set ELECTROMETER ATTENUATION SWITCH to infinity ( $\infty$ ), adjust the RECORDER ZERO CONTROL to the desired value, i.e. 0%, 5%, 10%, etc.
- b. Set the ATTENUATOR to “8” and adjust the ELECTROMETER ZERO CONTROL to position the recorder pen on the preestablished recorder zero.
- c. Observe the detector output signal for drift. If drift is more than 1% (of chart width) per minute, allow more time for the detector to stabilize or column bleed to minimize.
- d. When the baseline has stabilized, readjust the ELECTROMETER ZERO CONTROL for desired zero level on the chart.
- e. To establish the zero for the remaining three (3) ranges, follow the above procedure for the particular range you choose.

Refer to the recorder’s operating manual for correct chart speeds, warm-up times, etc.

#### 6. Computing Integrator Zeroing

The Series 580 FID GC may also be used with a computing integrator. The integrator makes full data acquisition more reliable and more accurate.

After the integrator is properly connected to the instrument, it may be turned "ON". At this time, the electrical or recorder zero should be established and reference should be made to the integrator's operating manual.

## 7. Calibration

- a. After allowing sufficient time for the Series 580 FID GC to equilibrate and the operating parameters are rechecked, adjust the RANGE SWITCH and ATTENUATOR to the sensitivity required for the analysis.
- b. Initial Analysis- The operation of the instrument cannot be evaluated without injection of a sample. Initial injections should be made with a relatively simple material that will elute in a short period of time. The sample should be as pure as possible to give 2 or 3 sharp peaks. No attempt should be made to start with complicated samples. Techniques of injections and analysis of data will require practice.
- c. Make solutions of known concentrations of the components of interest. These standards should bracket (span) the concentration of interest. If the analysis is normally analyzing in the 0.2.% range, the standards should be 0.1%, 0.2%, and 0.3%. These standard solutions should be made up by either WT/WT or VOL/VOL, but this must be consistent and not switched from one method to the other.
- d. Successive injections of the same sample size and standard should be made and the average output plotted to yield a curve of output vs concentration.

## 8. Standby and Overnight Conditions

When the instrument is used intermittently during the day or is needed right away the next morning, it is recommended that the instrument be kept in "STAND-BY" condition. This keeps the instrument ready to use without waiting for a long equilibration period. Proceed as follows:

- a. Reduce the carrier gas flow to save gas consumption.
- b. Turn Hydrogen flow "OFF".
- c. Turn Air "OFF".
- d. Turn recorder chart speed "OFF".
- e. Place ATTENUATOR on infinity ( $\infty$ ).



---

**FOR CERTAIN SAMPLE COMPOSITIONS THAT INTERACT WITH ATMOSPHERICS (OXYGEN, MOISTURE, ETC), IT IS NECESSARY TO THOROUGHLY PURGE THE ENTIRE INSTRUMENT OF SAMPLE GAS BEFORE SHUTDOWN USING AN INERT GAS — INCLUDING THE SAMPLE INLET. THIS IS REQUIRED FOR SAMPLES WITH HIGH CONCENTRATIONS OF COMPOUNDS THAT FORM ACIDS (HF, HCl, HBr, ETC) OR REACT VIOLENTLY AND/OR CORROSIVELY WITH ATMOSPHERIC ELEMENTS.**

---

## 9. Shut-Down Procedure

The following should be performed in the given sequence to ensure proper cool down of your GC and longer life of the detector.

- a. Turn the recorder “OFF”.
- b. Shut “OFF” the Hydrogen flow. Confirm that the flame has been extinguished.
- c. Shut “OFF” the Air flow.
- d. Reduce the temperature settings to 25° C. For a quicker cool-down of the oven, the oven lid may be raised and the COLUMN HEATER & FAN SWITCH placed in the “FAN ONLY” position.
- e. Turn the power “OFF”.
- f. After oven has cooled considerably, shut the carrier gas “OFF”.
- g. Recheck all gas cylinders to confirm flow has been shut off.

## C. Daily Setup Check List

It is good practice to check the following items at the beginning of each day or shift, and when starting up the instrument after a weekend shutdown.

### 1. Electrical

\_\_\_\_\_ Additional instrumentation is connected properly.

### 2. Pneumatic

\_\_\_\_\_ Gas cylinder supply pressures are sufficient.

Air = 40 psig

H<sub>2</sub> = 40 psig

He = 40 psig

\_\_\_\_\_ Gas flow rates are adjusted properly.

Air = 300 mL/min.

H<sub>2</sub> = 30 mL/min.

He = 30 mL/min. or as necessary for analysis

\_\_\_\_\_ Appropriate column is installed.

\_\_\_\_\_ Leak check made.

### 3. Front Panel

\_\_\_\_\_ All temperature settings are set to desired settings.

\_\_\_\_\_ Recorder/Integrator zeroed.

## Section 6

# General Notes on FID Operation

A. Maintain flows approximately as follows:

Hydrogen (H <sub>2</sub> ) .....	30 mL/min.
Air.....	300 mL/min.
Carrier .....	30 mL/min.

B. At start up, some operators use a higher hydrogen flow to permit faster ignition. This is a dangerous procedure. CARE SHOULD BE EXERCISED.

C. The flame cannot be seen; a small watch glass or mirror placed above the exhaust will show that the flame is ignited and burning by condensation on the glass. Tapers, paper, or matches should not be inserted into the exhaust as they will cause contamination inside the combustion chamber. They will usually put out the flame if already ignited.



---

***DO NOT LOOK INTO THE EXHAUST TUBE TO CONFIRM IGNITION. PERMANENT EYE DAMAGE MAY RESULT!***

---

D. Excessive carrier flow will cause the flame to go out. The combination of hydrogen and carrier gas should not exceed 60-70 mL/min.

E. Excess hydrogen will result in noise. Insufficient hydrogen flow will cause flameout.



---

***INSUFFICIENT AIR FLOW IS DANGEROUS AND CAN RESULT IN AN EXPLOSION.***



---

***DO NOT LET HYDROGEN ACCUMULATE IN THE DETECTOR! UPON RE-IGNITION OF THE FLAME, AN EXPLOSION MAY OCCUR, UNLESS HYDROGEN HAS BEEN ALLOWED TO DISSIPATE.***

---

G. Column/Injection Notes

The column supplied with this GC is a test column: 4' x 1/8" stainless steel, packed with Molecular Sieve 5A, 80/100 mesh and requires a 9/16" open-end wrench for tightening or removal.

Care should be exercised to ensure that this column is not used below 30 °C or above 375 °C. This column has been preconditioned.

Columns ordered by customer will vary and may or may not be installed at the factory depending on the customer's instructions at time of order.

#### H. Injector Temperature

The injector should be operated at a temperature that assures complete vaporization of the sample. Care should be taken to use septa that will withstand the operating temperature of the injection port. If necessary, they must be replaced after several injections if a seal cannot be obtained. The septum nut acts as a heat sink, it should be kept clean and polished.

#### I. Sample Injection

Proper techniques have been outlined in the literature. Practice is necessary for consistent injection of samples. Sharp, straight needles, and smooth rapid injection are needed to produce proper and complete vaporization of samples.

## Section 7 Maintenance & Service

### A. FID Cleaning & Servicing

**NO ATTEMPT** should be made to take the FID apart for repair or cleaning.

Call our Repair Department at (610) 954-9000 for assistance.

### B. Columns



---

***When ordering a new column, please specify:***  
***Instrument Model No. & Serial No.***  
***Whether the column is for Side “A” or “B”***  
***Column Length, Diameter, and material***  
***% Liquid Phase***  
***% Loading***  
***Solid Support***  
***Mesh Size***

---

1. The Series 580 FID GC comes supplied with one test column (unless otherwise stated at time of order):

4' x 1/8" stainless steel, packed with Molecular Sieve 5A, 80/100 mesh.

Care should be exercised to ensure that this column is not used below 30 °C or above 375 °C. This column has been preconditioned.

2. Columns for the Series 580 FID can be purchased from:

GOW-MAC Instrument Co.  
277 Brodhead Road  
Bethlehem, PA 18017  
Tel: (610) 954-9000  
Fax: (610) 954-0599

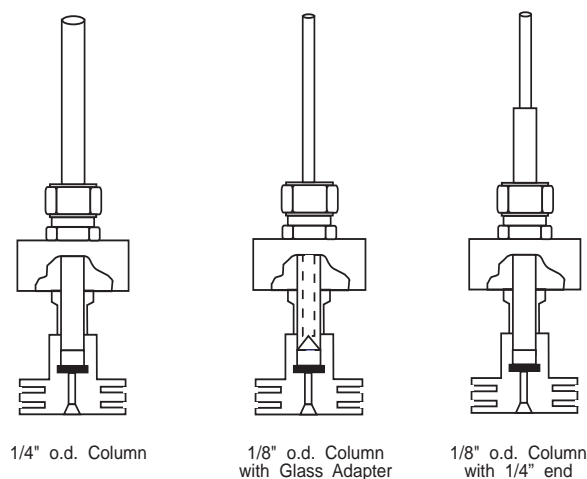


Figure 5-2

### 3. Changing Columns

Figure 5-2 shows the injection port for low dead volume and on column injection. Either 1/4" or 1/8" o.d. columns can be used as shown. All 1/8" o.d. columns are furnished with 1/4" ends with a 2 mm i.d. opening.

Care should be exercised when changing or removing columns. Damage to adjacent threads may occur if they are hit with a wrench or other object which may result in nuts becoming cross threaded.

Care should also be used when inserting the columns into the injection port assembly. Insert the column until it stops, making sure that it has reached the beveled end of the injection port. Then back off about 1/4" to allow the carrier gas to sweep into the column. By using this technique, on-column injections can be attained. CAREFULLY tighten nuts with a 9/16" open-ended wrench (or 7/16" wrench for 1/8" fittings). CHECK FOR LEAKS!

### C. Septums

The septa used in this instrument are standard 9 mm o.d. and may be obtained directly from GOW-MAC (Part No. 180-123S). The INJECTION PORT NUT may be removed and the SEPTUM replaced.



**BURN HAZARD!**

**INJECTION PORT NUTS MAY REACH VERY HIGH TEMPERATURES WEAR PROTECTIVE GLOVES WHEN HANDLING INJECTION PORT NUTS**

### D. Temperature Control

The Series 580 FID can be operated at temperatures ranging from ambient to 400 °C. Temperature controls on the injection ports, column oven, and detector are independent solid state proportioning type. Proportioning cycle rate is approximately 2 1/2 seconds with a total band width of 5 °C. Temperature readout and "SET" are on a 3 1/2 digit LED digital meter.



Selector buttons are used to read the desired temperatures.

A centrifugal blower fan circulates and distributes the heated air, thus eliminating temperature gradients. The blower also provides rapid cool down when needed.

#### E. Column Oven

The column oven is heated by a 500 W tubular heater controlled by a proportional control. The solid state control incorporates a platinum RTD (Resistance Temperature Detector) and a 3 3/4 turn set potentiometer. Built into the circuitry is a fail-safe feature which disables the controller's triac output in the event of a shorted or open sensor.

The "Temperature Fail Safe" feature has independent shut down at 400 °C for injection ports and detector. The column oven shuts down 30 °C above the column set point. The heating units return to safe condition when the temperatures decrease to safe levels. The controller is easily removed for service or replacement.

#### F. Detector Temperature Control

The detector is heated by one (1) 100 W heater mounted in the DETECTOR BASE. The temperature control sensor is also located in the base.

The detector temperature is controlled in the same manner as the column oven.

#### G. Injector Temperature Control

The injection port is heated by a 60 W heater and is mounted inside the injector block. The temperature control sensor is also located in the block.

The injection port temperature is controlled in the same manner as the column oven.

#### H. Servicing

Allow 10 minutes for high voltage discharge after power is turned "OFF", before attempting to service the GC.

Servicing of the complex integrated circuits in the electronic housing of the unit should be performed by qualified personnel only. All calibrations and adjustments are made at the factory before shipping. Once these calibrations are performed, they should never need adjustment again during the life of the unit.

If questions arise that this manual does not answer or service of your GC goes beyond these instructions, please call our Repair Department at (610) 954-9000.

For a complete overhaul and cleaning of the FID or the entire instrument, please call us for a Return Authorization Number and further instructions for the return of your GC. Our receiving address for repairs is:

GOW-MAC Instrument Co.  
Attn: Repair Dept. RMA# \_\_\_\_\_  
277 Brodhead Road  
Bethlehem, PA 18017

Upon inspection of the instrument, repair costs will be furnished, IF REQUESTED, prior to repair.



## Section 8 Valving

If your instrument is not equipped with valves, go on to Section 9.

### A. General

Many types of valve configurations are available with your Series 580 GC. For assistance in determining the proper valve for your application, contact GOW-MAC.

All valves must be treated with care. Foreign materials such as metal filings or abrasive particles can permanently damage the sliders of the valves. GOW-MAC installs stainless steel frits on the inlets of sampling valves to help protect against this type of damage.



---

**VALVES HAVE UPPER TEMPERATURE LIMITS WHICH, IF EXCEEDED, CAN PERMANENTLY DAMAGE SLIDERS.**

**LOW TEMP VALVES: ambient - 175 °C**

**HIGH TEMP VALVES: 175 °C - 300 °C**

---

All valves may be fitted with pneumatic actuators which are available from GOW-MAC. Air pressure of 30-60 psig is required for actuation.

### B. Valves and Their Functions

Valves are used to accomplish two basic operations in GC. One is to inject a sample onto the head of the GC column and the other, to reroute or “switch” the flow of the carrier gas or sample stream.

Within the broad category of switching, there are many valve functions, such as backflushing, detector switching or column selection. (See action G Typical Gas Sampling Valves).

Although most valves are categorized as either sampling or switching, some valves combine both functions and are termed “multifunction” valves.

### C. Sampling Corrosive Materials

When dealing with harsh samples, such as chlorine and wet acid gases, valves made of Tantalum or Hastelloy C-276 are recommended.

### **Corrosion Resistance of Tantalum to Some Common Chemicals**

#### **Excellent**

Sulfuric Acid  
Hydrochloric acid

Nitric Acid

All organic corrosive chemicals

#### **Slow Attack**

Strongly  
alkaline  
compounds

#### **Not Recommended**

Hydrofluoric acid  
Fluorine gas

### **Corrosion To Resistance of Hastelloy C-276 Some Common Chemicals**

#### **Excellent**

Acetic acid  
Amines  
Ammonia  
Chlorine (dry)  
Formic acid  
Hydrogen chloride (dry)  
Hydrogen sulfide  
Phosgene  
Sulfur dioxide

#### **Good**

Bromine Gas  
Chlorine (wet)  
Hydrochloric acid  
Nitric acid  
Phosphoric acid

#### **Not Recommended**

Fluorine  
Hydrofluoric acid  
Hydrofluoride

#### D. Gas Sampling Valve

The gas sample valve is used to introduce gas samples into the chromatograph on a reproducible basis. The sample may be taken from a static system or from a flowing stream. Valves are also used to back-flush column, column selection, sample selection and detector switching.

Since the most common use of the valve is for sample injection, only that application will be discussed here in general terms. The valve may be installed in place of, or in series with the injection port. The valve may be permanently connected to a sample source or the sample may be passed through by means of a pump or other sample container.

The size of the sample loop is fixed but can be changed easily. (Section E Sample Loops).

The valve is first placed in the counter clockwise (CCW) position, that is, the valve handle is as far counter clockwise as it will go. At this time the sample is purged through the loop and the carrier gas merely passes through the valve to the column. When the valve handle is placed in the clockwise (CW) position, the carrier gas purges the sample from the loop and carries it through the column. The valve is then returned to the CCW position.



NOTE

---

***The sample is released to atmosphere in either valve position.***

---

Care must be exercised to allow sufficient time for the sample loop to be completely filled with the sample before injection. This is easily calculated from the carrier gas flow and size of the sample loop. The same holds true for time allowed for the sample to enter the column.

## E. Sample Loops

Sampling valves are supplied with a .25 mL loop if not otherwise specified on the order. Other sample loops are available: 0.25 mL, 0.50 mL, 1.0 mL, 2.0 mL, 3.0 mL, 4.0 mL, 5.0 mL, 10.0 mL, and 20.0 mL.

### **PROCEDURE FOR REMOVING AND REPLACING LOOPS IN GAS SAMPLING VALVES**

1. Remove the four (4) screws holding the valve housing lid in place. Remove valve housing lid.
2. Unscrew loop mounting fittings (2) and remove loop.
3. Insert new loop and tighten fittings.
4. Replace valve housing lid.

## F. Pneumatic Actuated Valves

If pneumatic actuated gas valves are installed, you may override the auto feature by a switch on the accessory housing panel. An air pressure of about 30-60 psig is recommended to fully drive the valve.

Option 411 Interface PCB is used to activate the auto valves from a TTL closure generated by an external source, i.e. Computing Integrator. Option 411 will time a maximum of three (3) valves.

Option 412 accessory accepts up to three (3) valves in a separate oven assembly located in the accessory housing.

## G. Automatic Valve Operation (Option 411: TTL Interface)

1. The valves in the Series 580 FID Gas Chromatograph can be operated either manually or through the use of the TIME FUNCTIONS control on a computing integrator.
2. Time Functions

The valves correspond to the following "Time Functions":

T3 = Valve 1

T4 = Valve 2

T5 = Valve 3

### 3. Programming

Programming can be done as either part of the dialogue or by directly using the TFN command on the computing integrator keyboard.

### 4. Setting Time Functions

When programming the TFN, the computing integrator will ask for three (3) values:

TT = \_\_\_\_\_  
(when to activate)

TF = \_\_\_\_\_  
(what to activate)

TV = \_\_\_\_\_  
[Turn function] (ON = 1)  
(OFF = 0)

The TT is the time the valves are to switch.

Example: Injection valve to inject sample after 1 minute, enter TT = 1.0

To activate Gas Sample Valve, enter TF = T3

To turn valve one, enter TV = 1

## Section 9

# Capillary Chromatography

If you did not order a capillary system with this GC, go on to the next section.

### A. Introduction

Capillary chromatography provides the utmost in GC performance. Advantages to using capillary techniques include high efficiencies — about 4000 plates per meter versus about 500 plates per meter for packed columns — and shorter retention times with better resolution.

If your sample does not have a complex mixture of components, it is possible to operate the system at higher than optimum temperatures and flow rates, therefore speeding up the analysis time. Using the capillary column samples that normally take 30 minutes to elute on a packed column, can be separated with greater resolution in one or two minutes.

These columns consist of open tubes from 10 meters to 100 meters in length and from 0.5 - 0.2 mm inside diameter; they may be made of glass, stainless steel or fused silica. The inside of the tubes are coated with the liquid phase in thickness of 5 microns to less than 1 micron. Because the liquid phase coating is relatively thin and the volume of these columns so small, these columns are easily overloaded. To overcome the effects of overloading, an inlet splitter is used which divides the amount of sample injected into the instrument. A small portion of the sample enters the column and the major portion is vented through a charcoal trap into the atmosphere.

Overloaded peaks can be identified easily by observing the peaks as they elute. If the pen goes up slowly and comes down rapidly (i.e. the slope of the front portion of the peak is resolved more gradually than the trailing part) then the peak is overloaded and a smaller sample should be injected or higher split ratio used to assure that smaller samples reach the column.

### B. Operation of the Capillary System

1. MAKE-UP GAS FLOW ADJ: used to regulate make-up gas.
2. FLOW DIVERTER: used to measure make-up gas.
3. SPLITTER VENT: outlet from splitter where ratio is measured.
4. PRESSURE CONTROL: used to set flow rate through the column.
5. Pressure Gauge: measures pressure at the head of the column.
6. FLOW ADJ B: use to adjust total system flow. Read from helium rotameter.

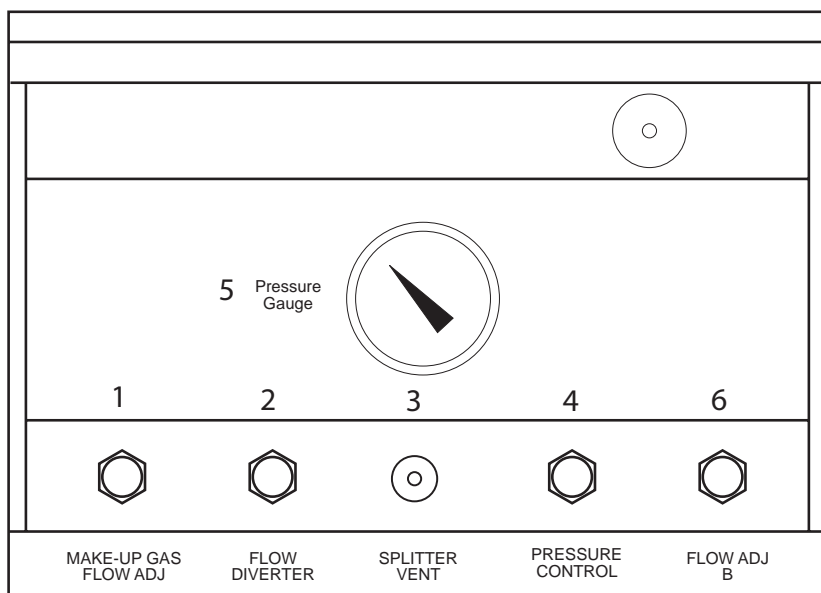


Figure 9-1: Series 580 FID Capillary Splitter Controls  
(For illustrative purpose only. Instruments may vary.)

### C. Installation of Capillary Column

#### Fused Silica Columns

1. Fused silica columns are mounted exactly as above with two exceptions, 1) the column come mounted in a cage and 2) the smaller diameter columns can fit inside the glass tubing of the injector and the make-up gas tee, eliminating some of the dead volume.

Columns should be inserted 70 mm into the splitter. If the column will fit inside the flame tip it can be inserted 85 mm from the 1/4" nut on the FID.

2. It is recommended that ferrules with an inner diameter matching the size of the column be used for the installation of fused silica columns.

#### 3. Injection Systems

- a. Option 103 Split/Splitless Injection System
- b. Option 104 Direct, Wide Bore System

Both systems include make-up gas connections for the FID. A metering valve controls the make-up gas to allow optimum flow to the FID.





NOTE

---

**A Rotameter Flow Assembly (p/n 75-300-HE or 75-300-N2) and the Hand-held Digital Flowmeter (p/n 180-567) are highly recommended for use with capillary columns.**

**When installing a new capillary column, the column should be placed into the detector as far as it will go. The other end of the column should be placed into the glass adapter approximately 3/4".**

---

#### D. Operation of the System

1. Using FLOW METERING VALVE "B", set the flow to 30 mL/min. Read off of the helium rotameter.
2. Put FLOWMETER onto the SPLITTER VENT.
3. Using the PRESSURE CONTROL, set the flow out of the SPLITTER VENT to 27 mL/min.
4. In theory, this should leave 3 mL/min. going through the column. This should yield a 27:3 or 9:1 split.
5. Use the make-up gas measured at the MAKE-UP GAS FLOW VENT to bring your total gas into the FID up to 30 mL/min.
6. In order to determine the flow rate of the column, inject a 5 - 10  $\mu$ L sample of methane and record the elution time in seconds.
7. At this point, the split ratio can be calculated by measuring the flow rate using a bubble flowmeter connected at the SPLITTER VENT and adjusting the flow rate by adjusting the PRESSURE CONTROL to give a split ratio between 10:1 - 100:1 as required.

$$\text{Split Ratio} = \frac{\text{Amount of Gas coming out vent}}{\text{Flow in mL/min through column}}$$

In most literature, capillary flows are expressed as a linear velocity.

$$\text{Linear Velocity} = \frac{\text{Column length in cm}}{\text{Seconds}}$$

A flow rate in mL/min. is needed to calculate the split ratio. The flow rate in mL/min. can be calculated from the volume of the column.

$$V = \pi r^2 H$$

$$\text{Flow rate} = \frac{V \times 60}{\text{Sec for CH}_4 \text{ to elute}}$$

For a 15 m x 0.24 mm column,  $r = 0.0122$  cm

$$V = \pi(0.0122)^2 \times 1500$$

$$V = 0.70139 \text{ cc}$$

$$\text{Flow rate} = \frac{0.70139 \text{ cc} \times 60 \text{ sec/min.}}{34 \text{ sec.}}$$

Flow rate range for 0.2 mm quartz columns is 0.5 - 1 cc/min.



NOTE

---

***For a direct read of the flow, connect the capillary column adapter (p/n 180-966-2) to the end of the column, then connect the other end of the adapter to a flowmeter.***

---

8. Examine the methane peak; no tailing should be observed. If tailing is present, this indicates that the column is not installed properly.
9. Inject your sample with a swift smooth action of the plunger.

When injecting samples, make sure to insert the syringe needle about 2" through the injection port. This will ensure proper injection technique.

Sample volume should NOT exceed 0.2  $\mu\text{L}$  for capillary columns and 0.5  $\mu\text{L}$  for wide bore capillary columns.

## Section 10

# Ruthenium Methanizer

If your GC is not equipped with Option 401-Ruthenium Methanizer, please go on to the next section.

### A. General

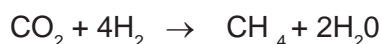
The Option 401 Ruthenium Methanizer is designed to be used with FID gas chromatographs for the sensitive determination of CO and CO<sub>2</sub>. With the broad linear range of the flame ionization detector, both high and low level concentrations of these gases can be analyzed with excellent results.

If your instrument was not equipped with Option 401 at the time of purchase, our Model 59-125 Ruthenium Methanizer Kit will retrofit on your Series 580 FID GC and all other gas chromatographs.

### B. Operation

Conversion of CO and CO<sub>2</sub>

The Option 401 catalytic methanizing unit is designed for in-line conversion of CO and CO<sub>2</sub>. The conversion is:



Maximum conversion of CO and CO<sub>2</sub> can be achieved with fully reduced ruthenium catalyst which comes packed in the GOW-MAC methanizer. Operated at 350 °C, the hydrogen gas flow to the FID burner is routed through the methanizing unit. An auxiliary flow of carrier gas is then used to obtain proper carrier H<sub>2</sub> ratio for detector sensitivity.



NOTE

---

**WHEN METHANIZER IS INSTALLED ON GOW-MAC FID GC'S, A CAP IS INSTALLED ON H<sub>2</sub> INLET TUBE.**

---

#### 1. Series 580 FID GC Methanizer Operation

- a. Temperature control of the methanizer is achieved with a separate control unit mounted in the Accessory Housing (located on the left side of the GC). Included in the temperature control unit is:
  - Dial to set temperature
  - Meter for temperature readout

- b. In order to obtain the fast heat-up, the Methanizer Temperature Control should be turned to maximum for a specific time. The length of time for the control to be at maximum must be determined experimentally. The Ruthenium Methanizer should be heated to a temperature of 350 °C with the hydrogen flow "ON" for a period of 30 minutes, allowing the temperature to stabilize.
- c. For Series 580 FID GCs using a 6-port Series Bypass Valve
  - i. Methanizer H<sub>2</sub> IN connection is located on the back of the instrument.
  - ii. Use needle (metering) valve located on the front of the instrument for flow adjustment.
  - iii. Measurement of H<sub>2</sub> flow must be made at the point where the carrier flow enters the FID. This requires disconnecting the flow system at the 1/16" Swagelok® fitting.




---

**A leak check MUST be performed after the flow system is reconnected to ensure a hydrogen gas leak is not present.**

---

- d. For Series 580 FID GCs using a 10-port Series Bypass Valve
  - i. Methanizer H<sub>2</sub> IN connection and flow adjustment are located on the 75-300 Rotameter Assembly.

C. Example procedure for use of ruthenium Methanizer described in a typical analysis to determine the efficiency of the methanizer to reduce CO, CO<sub>2</sub> quantitatively to CH<sub>4</sub>.

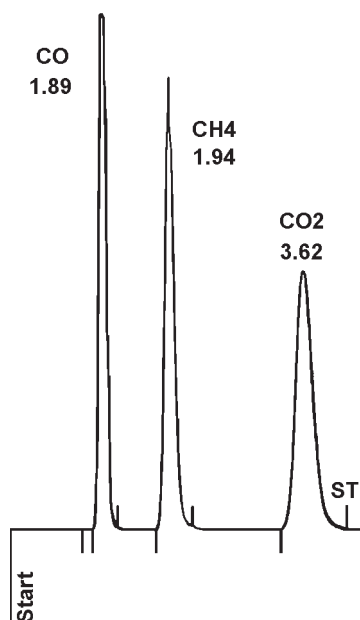
1. Ruthenium Methanizer Conditions

- a. Prior to use, the Ruthenium Methanizer should be heated to a temperature of 350° C with the hydrogen flow "ON", for a period of "30 minutes, allowing the temperature to stabilize.
- b. Analysis Parameters

Column:	6' x 1/8" S.S.	Sample:	1% CO, 1% CH <sub>4</sub> , CO <sub>2</sub>
Support:	Spherocarb	Sample Size:	2 mL
Carrier Gas:	He	Temp:	
Carrier Flow:	30 mL/min.	Column	140 °C
H Flow:	30 mL/min.	Inj. Port	150 °C
Air Flow:	300 mL/min.	Detector	180 °C
Recorder:	1 mV	Attenuation:	2 <sup>2</sup> x 10 <sup>-9</sup>
Methanizer Temp:	350 °C	Chart Speed:	1 cm/min.

- c. The sample used is a certified gas mixture containing 1% each of argon, carbon dioxide, carbon monoxide, hydrogen, nitrogen, and methane with the balance of helium being allowed to completely flush a 500 ml gas sampling tube at ambient temperature. After this procedure, 0.5, 1.0 and 1.5 mL quantities of the gas mixture should be removed with a gas tight syringe and injected into the gas chromatograph.

At this point, the following peaks should be observed:



Typical Chromatogram showing CO, CH<sub>4</sub>, and CO<sub>2</sub>

c. RESULTS: For CO<sub>2</sub> the following results were tabulated:

<u>mL injected</u>	<u>peak area</u>
0.5	288,800
1.0	444,820
1.5	690,700

These results indicate a linear relationship with correlation coefficient of 0.9917, the equation of the linear regression line being  $y = 401900 + 12873x$ .

## Material Safety Data Sheet

Version 5.0  
 Revision Date 07/23/2012  
 Print Date 12/06/2012

### 1. PRODUCT AND COMPANY IDENTIFICATION

Product name : Ruthenium(III) chloride trihydrate

Product Number : 10452  
 Brand : Aldrich

Supplier : Sigma-Aldrich  
 3050 Spruce Street  
 SAINT LOUIS MO 63103  
 USA

Telephone : +1 800-325-5832  
 Fax : +1 800-325-5052  
 Emergency Phone # (For both supplier and manufacturer) : (314) 776-6555

Preparation Information : Sigma-Aldrich Corporation  
 Product Safety - Americas Region  
 1-800-521-8956

### 2. HAZARDS IDENTIFICATION

#### Emergency Overview

**OSHA Hazards**  
 Corrosive

**GHS Classification**  
 Skin corrosion (Category 1B)  
 Serious eye damage (Category 1)

**GHS Label elements, including precautionary statements**

Pictogram



Signal word : Danger

Hazard statement(s)  
 H314 : Causes severe skin burns and eye damage.

Precautionary statement(s)  
 P280 : Wear protective gloves/ protective clothing/ eye protection/ face protection.  
 P305 + P351 + P338 : IF IN EYES: Rinse cautiously with water for several minutes. Remove contact lenses, if present and easy to do. Continue rinsing.  
 P310 : Immediately call a POISON CENTER or doctor/ physician.

**HMIS Classification**

Health hazard: 3  
 Flammability: 0  
 Physical hazards: 1

**NFPA Rating**

Health hazard: 3  
 Fire: 0  
 Reactivity Hazard: 1

Health hazard: 3

**Fire:** 0  
**Reactivity Hazard:** 0

#### Potential Health Effects

**Inhalation** May be harmful if inhaled. Material is extremely destructive to the tissue of the mucous membranes and upper respiratory tract.  
**Skin** May be harmful if absorbed through skin. Causes skin burns.  
**Eyes** Causes eye burns.  
**Ingestion** May be harmful if swallowed.

---

### 3. COMPOSITION/INFORMATION ON INGREDIENTS

Formula : RuCl<sub>3</sub>.3H<sub>2</sub>O  
Molecular Weight : 261.47 g/mol

Component	Concentration
<b>Ruthenium(III) chloride trihydrate</b>	
CAS-No.	13815-94-6
	-

---

### 4. FIRST AID MEASURES

#### General advice

Consult a physician. Show this safety data sheet to the doctor in attendance. Move out of dangerous area.

#### If inhaled

If breathed in, move person into fresh air. If not breathing, give artificial respiration. Consult a physician.

#### In case of skin contact

Take off contaminated clothing and shoes immediately. Wash off with soap and plenty of water. Consult a physician.

#### In case of eye contact

Rinse thoroughly with plenty of water for at least 15 minutes and consult a physician. Continue rinsing eyes during transport to hospital.

#### If swallowed

Do NOT induce vomiting. Never give anything by mouth to an unconscious person. Rinse mouth with water. Consult a physician.

---

### 5. FIREFIGHTING MEASURES

#### Suitable extinguishing media

Use extinguishing measures that are appropriate to local circumstances and the surrounding environment.

#### Special protective equipment for firefighters

Wear self contained breathing apparatus for fire fighting if necessary.

#### Hazardous combustion products

Hazardous decomposition products formed under fire conditions. - Hydrogen chloride gas, Ruthenium oxide

#### Further information

The product itself does not burn.

---

### 6. ACCIDENTAL RELEASE MEASURES

#### Personal precautions

Use personal protective equipment. Avoid dust formation. Avoid breathing vapors, mist or gas. Ensure adequate ventilation. Evacuate personnel to safe areas. Avoid breathing dust.

#### Environmental precautions

Do not let product enter drains.

#### Methods and materials for containment and cleaning up

Pick up and arrange disposal without creating dust. Sweep up and shovel. Keep in suitable, closed containers for disposal.

---

### 7. HANDLING AND STORAGE

**Precautions for safe handling**

Avoid formation of dust and aerosols.  
 Provide appropriate exhaust ventilation at places where dust is formed.

**Conditions for safe storage**

Keep container tightly closed in a dry and well-ventilated place.

Air sensitive. hygroscopic

**8. EXPOSURE CONTROLS/PERSONAL PROTECTION**

Contains no substances with occupational exposure limit values.

**Personal protective equipment****Respiratory protection**

Where risk assessment shows air-purifying respirators are appropriate use a full-face particle respirator type N100 (US) or type P3 (EN 143) respirator cartridges as a backup to engineering controls. If the respirator is the sole means of protection, use a full-face supplied air respirator. Use respirators and components tested and approved under appropriate government standards such as NIOSH (US) or CEN (EU).

**Hand protection**

Handle with gloves. Gloves must be inspected prior to use. Use proper glove removal technique (without touching glove's outer surface) to avoid skin contact with this product. Dispose of contaminated gloves after use in accordance with applicable laws and good laboratory practices. Wash and dry hands.

**Eye protection**

Face shield and safety glasses Use equipment for eye protection tested and approved under appropriate government standards such as NIOSH (US) or EN 166(EU).

**Skin and body protection**

Complete suit protecting against chemicals, The type of protective equipment must be selected according to the concentration and amount of the dangerous substance at the specific workplace.

**Hygiene measures**

Handle in accordance with good industrial hygiene and safety practice. Wash hands before breaks and at the end of workday.

**9. PHYSICAL AND CHEMICAL PROPERTIES****Appearance**

Form	solid
Colour	no data available

**Safety data**

pH	no data available
Melting point/freezing point	no data available
Boiling point	no data available
Flash point	not applicable
Ignition temperature	no data available
Autoignition temperature	no data available
Lower explosion limit	no data available
Upper explosion limit	no data available
Vapour pressure	no data available
Density	no data available
Water solubility	no data available



Partition coefficient: n-octanol/water	no data available
Relative vapour density	no data available
Odour	no data available
Odour Threshold	no data available
Evaporation rate	no data available

---

## 10. STABILITY AND REACTIVITY

### Chemical stability

Stable under recommended storage conditions.

### Possibility of hazardous reactions

no data available

### Conditions to avoid

no data available

### Materials to avoid

Zinc

### Hazardous decomposition products

Hazardous decomposition products formed under fire conditions. - Hydrogen chloride gas, Ruthenium oxide

Other decomposition products - no data available

---

## 11. TOXICOLOGICAL INFORMATION

### Acute toxicity

#### Oral LD50

no data available

#### Inhalation LC50

no data available

#### Dermal LD50

no data available

#### Other information on acute toxicity

no data available

### Skin corrosion/irritation

no data available

### Serious eye damage/eye irritation

no data available

### Respiratory or skin sensitization

no data available

### Germ cell mutagenicity

no data available

### Carcinogenicity

IARC: No component of this product present at levels greater than or equal to 0.1% is identified as probable, possible or confirmed human carcinogen by IARC.

ACGIH: No component of this product present at levels greater than or equal to 0.1% is identified as a carcinogen or potential carcinogen by ACGIH.

NTP: No component of this product present at levels greater than or equal to 0.1% is identified as a known or anticipated carcinogen by NTP.

OSHA: No component of this product present at levels greater than or equal to 0.1% is identified as a carcinogen or potential carcinogen by OSHA.

**Reproductive toxicity**

no data available

**Teratogenicity**

no data available

**Specific target organ toxicity - single exposure (Globally Harmonized System)**

no data available

**Specific target organ toxicity - repeated exposure (Globally Harmonized System)**

no data available

**Aspiration hazard**

no data available

**Potential health effects**

<b>Inhalation</b>	May be harmful if inhaled. Material is extremely destructive to the tissue of the mucous membranes and upper respiratory tract.
<b>Ingestion</b>	May be harmful if swallowed.
<b>Skin</b>	May be harmful if absorbed through skin. Causes skin burns.
<b>Eyes</b>	Causes eye burns.

**Synergistic effects**

no data available

**Additional Information**

RTECS: Not available

---

**12. ECOLOGICAL INFORMATION****Toxicity**

no data available

**Persistence and degradability**

no data available

**Bioaccumulative potential**

no data available

**Mobility in soil**

no data available

**PBT and vPvB assessment**

no data available

**Other adverse effects**

no data available

---

**13. DISPOSAL CONSIDERATIONS****Product**

Offer surplus and non-recyclable solutions to a licensed disposal company. Contact a licensed professional waste disposal service to dispose of this material. Dissolve or mix the material with a combustible solvent and burn in a chemical incinerator equipped with an afterburner and scrubber.

**Contaminated packaging**

Dispose of as unused product.

---

**14. TRANSPORT INFORMATION****DOT (US)**

UN number: 3260 Class: 8

Packing group: II

Proper shipping name: Corrosive solid, acidic, inorganic, n.o.s. (Ruthenium(III) chloride trihydrate)

Marine pollutant: No  
Poison Inhalation Hazard: No

**IMDG**

UN number: 3260 Class: 8 Packing group: II EMS-No: F-A, S-B  
Proper shipping name: CORROSIVE SOLID, ACIDIC, INORGANIC, N.O.S. (Ruthenium(III) chloride trihydrate)  
Marine pollutant: No

**IATA**

UN number: 3260 Class: 8 Packing group: II  
Proper shipping name: Corrosive solid, acidic, inorganic, n.o.s. (Ruthenium(III) chloride trihydrate)

---

**15. REGULATORY INFORMATION**

**OSHA Hazards**

Corrosive

**SARA 302 Components**

SARA 302: No chemicals in this material are subject to the reporting requirements of SARA Title III, Section 302.

**SARA 313 Components**

SARA 313: This material does not contain any chemical components with known CAS numbers that exceed the threshold (De Minimis) reporting levels established by SARA Title III, Section 313.

**SARA 311/312 Hazards**

Acute Health Hazard

**Massachusetts Right To Know Components**

No components are subject to the Massachusetts Right to Know Act.

**Pennsylvania Right To Know Components**

	CAS-No.	Revision Date
Ruthenium(III) chloride trihydrate	13815-94-6	

**New Jersey Right To Know Components**

	CAS-No.	Revision Date
Ruthenium(III) chloride trihydrate	13815-94-6	

**California Prop. 65 Components**

This product does not contain any chemicals known to State of California to cause cancer, birth defects, or any other reproductive harm.

---

**16. OTHER INFORMATION**

**Further information**

Copyright 2012 Sigma-Aldrich Co. LLC. License granted to make unlimited paper copies for internal use only.  
The above information is believed to be correct but does not purport to be all inclusive and shall be used only as a guide. The information in this document is based on the present state of our knowledge and is applicable to the product with regard to appropriate safety precautions. It does not represent any guarantee of the properties of the product. Sigma-Aldrich Corporation and its Affiliates shall not be held liable for any damage resulting from handling or from contact with the above product. See [www.sigma-aldrich.com](http://www.sigma-aldrich.com) and/or the reverse side of invoice or packing slip for additional terms and conditions of sale.



## Section 11

# Troubleshooting Chromatographic Interpretations\*

<u>Symptom</u>	<u>Cause</u>	<u>Remedy</u>
No Peaks.	Power supply malfunction	Check fuses.
	Incorrect mode selected on detector controller module.	Depress correct mode select switch.
	Detector flame out.	Ignite detector flame; check hydrogen and/or air flow; check for plugged flame tip.
	No carrier gas flow.	Turn on carrier gas; replace carrier gas cylinder if empty; check for obstructed carrier gas lines.
	Injector septum leaking.	Replace septum.
	Column connections leaking.	Tighten connections.
	Carrier gas connected to wrong injector.	Provide correct carrier gas connection to injector.
Poor sensitivity with normal retention times	Syringe leaking or plugged.	Replace syringe.
	Sensitivity Range too low or attenuation too high.	Select correct sensitivity with electrometer RANGE and/or ATTENUATOR switches.
	Insufficient sample size.	Increase sample size.
	Decomposed sample.	Prepare fresh sample.
	Poor injection technique.	Review injection techniques.
	Syringe leaking or plugged.	Replace syringe.
	Carrier gas leaking at injector septum, column fittings, etc.	Locate and correct leak.



\* Taken from "Basic Gas Chromatography" by McNair and E.J. Bonelli (available from GOW-MAC, P/N 145-101).

**Symptom**

**Cause**

**Remedy**

Poor sensitivity with normal retention times (cont)

Carrier gas flow rate incorrect.

Adjust flow rate.

Hydrogen or air flow rate incorrect.

Adjust flow rates.

Obstruction in flame tip or incorrect flame-tip orifice.

Call GOW-MAC.

Poor sensitivity with increased retention time

Carrier gas flow rate too low.

Adjust carrier gas flow rate; check for depleted carrier gas supply or obstructed carrier gas lines.



Carrier gas leaking at injector septum, column, etc.

Locate and correct leak.

Column temperature too low.

Increase column temperature

Negative peaks.

Recorder leads reversed.

Check recorder connections.

Detector controller OUTPUT polarity (+/-) switch in wrong position.

Select correct polarity for location of analytical column.

Sample injected into wrong column.

Inject sample into correct column.

Irregular baseline drift when operating isothermally.

Poor instrument location.

Move instrument to a location where it is not subject to drafts and/or ambient temperature changes



Instrument not properly grounded.

Make sure instrument and recorder are connected to good earth ground.

Recorder defective.

Set detector controller ATTENUATOR switch to ( $\infty$ ). If drift continues, recorder is defective. See recorder manual.

Detector base contaminated.

Call GOW-MAC.

**Symptom**

**Cause**

**Remedy**

Irregular baseline drift when operating isothermally (cont)

Carrier gas leaking at injector septum, column, etc.

Locate and correct leak.

Column packing bleeding.

Condition column; operate column at a lower temperature; replace column or packing. Some packing materials cannot be operated at elevated temperatures without difficulty. Drifting may occur even on well-conditioned columns in which carrier gas flow rates have been carefully optimized.

Poor carrier gas regulation

Check carrier gas supply pressure; check carrier gas regulator and flow controller to ensure proper operation.

Poor hydrogen and/or air regulation.

Check hydrogen and air supplies; check gas regulators and flow controllers to ensure proper operation.

Irregular baseline shifting.



Column not properly conditioned.

Condition column.

Excessive column bleeding from well-conditioned column.

Use different column. Some packing materials cannot be operated at elevated temperatures without difficulty. This symptom may occur even on well-conditioned columns in which carrier gas flow rates have been carefully optimized.

Column contaminated.

Recondition column.

Baseline stepping. Baseline does not return to zero, attenuation is incorrect, peaks are flat-topped.



Instrument and/or recorder properly grounded.

Make sure instrument and recorder are connected to good earth ground.

Recorder gain and/or damping control improperly adjusted.

Adjust recorder gain and/or damping control. Refer to recorder manual.

**Symptom**

Baseline cannot be set properly.



**Cause**

Adjustable zero on recorder not properly set.

Recorder improperly connected.

Recorder defective.

Excessive background from column bleed.

Detector-oven temperature controller defective.

Column oven temperature controller defective.

Poor instrument location.

Carrier gas flow regulator defective.

Carrier gas supply pressure too low to allow regulator to control properly.

Detector temperature increasing (decreasing).

Leak in FID base.

Quick atmospheric pressure changes from opening and closing doors, blowers, etc.

Dust particles or other foreign material burned in flame.

Loose column fittings.  
Electronic circuitry defective.

**Remedy**

Set detector controller ATTENUATOR switch to infinity ( $\infty$ ) and adjust recorder zero.

Check recorder connections. Remove any connections between recorder inputs and ground or shield.

See recorder manual.

Condition column; use different column.

Replace temperature-sensing probe.

Replace temperature-sensing probe.

Move instrument to a location where it is not subject to drafts and/or ambient temperature changes.

Replace carrier gas flow regulator.

Replace carrier gas cylinder.

Allow sufficient time for detector to restabilize after changing its temperature.

Replace defective base or flame tip.

Relocate instrument to minimize problem. Do not locate under heater or air conditioner blowers.

Keep detector chamber free of dust particles. Blow out or vacuum detector to remove dust.

Tighten column connections.  
Consult GOW-MAC Engineering

Sinusoidal baseline drift.



Constant baseline drift in one direction.



Sharp spiking at irregular intervals.

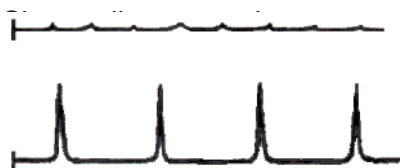




**Symptom**

**Cause**

**Remedy**



Condensation in flow lines causing carrier gas to bubble through.

Heat lines to remove condensation while purging with dry gas.

Water condensation in hydrogen line coming from hydrogen generator.

Remove water from line and replace or regenerate filter.



Contaminated column or excessive column bleed.

Recondition column.

Contaminated injector.

Clean injector and replace septum.

Contaminated detector.

Call GOW-MAC.

Water condensing inside flame detector shell.

Raise detector temperature to at least 50 °C above column temperature to eliminate condensation.

New flame tip.

Bake new flame tip at 350 °C for 8 to 16 hours.

Defective recorder.

Set detector controller ATTENUATOR switch to infinity ( $\infty$ ). If noise continues, check recorder. See recorder manual.

Recorder slidewire dirty.

Clean recorder slidewire.

Carrier gas flow rate too high.

Reduce carrier gas flow rate.

Air and/or hydrogen flow rates incorrect.

Adjust flow rates to proper levels.

Carrier gas leaking.

Locate and correct leak.

Bad ground connection.

Make sure all instruments are connected to good earth ground.

Electronic circuitry defective.

Consult GOW-MAC Engineering

**Symptom**



**Cause**

Injector temperature too high or too low.

Septum contaminated.

Column-oven temperature too low.

Incorrect column for application. Interaction between sample material and column mobile phase or solid support.

**Remedy**

Readjust injector temperature.

Replace septum.

Increase column-oven temperature.

Use different column.

Leading peaks



Column overloaded.  
Sample size too large for column diameter and length.

Sample condensed in system.

Decrease sample size.

Check that injector and detector settings are correct.

Unresolved peaks too high.



Column-oven temperature too high.  
Column too short.

Mobile phase has baked off of column support material.

Reduce column-oven temperature.  
Use longer column.

Replace or repack column.



Incorrect column for application.

Consult GOW-MAC for column advice.

Carrier gas flow rate too high.

Reduce carrier gas flow rate.

Poor injection technique.

Review sample injection techniques.

Round-topped peaks



Operating beyond linear dynamic range of detector.

Reduce sample size.

Recorder gain too low.

Adjust recorder gain. See recorder manual.

Square-topped peaks



Detector controller output exceeds recorder input range.

Normal for solvent peak.  
Reduce detector controller sensitivity, if desired.

Recorder slidewire defective or mechanism binding.

Check recorder operation.  
See recorder manual.

**Symptom**

**Cause**

**Remedy**

Extra peaks



Heavy residual material eluting from previous sample injection (chromatogram I).

Allow sufficient time for previous sample to elute.

I



Condensed moisture or other impurities from carrier gas eluting during temperature-programmed run. (chromatogram I).

Install, replace or regenerate carrier gas filter.

II



Desorption from column packing when solvent is injected (chromatogram II).

Make several solvent injections. and recondition column.

Sample decomposition (chromatogram II).

Reduce injector temperature. Use different column if packing material is causing or catalyzing decomposition.

Contaminated sample

Ensure proper preparation of sample prior to injection.

Sample interaction with mobile phase or solid support of column packing (chromatograms I & II).

Use different column. Consult GOW-MAC for column advice.

Contamination from glassware, syringes, etc. (chromatograms I & II).

Make sure glassware, syringes, etc., are clean.

Sudden drop-off of otherwise normal peak. Recorder pen returns to level below previous baseline. FID flame becomes extinguished.

Sample size too large.

Reduce sample size. Reignite flame.

Carrier gas flow rate too high.

Adjust carrier gas flow rate.

Flame tip orifice too small.

Call GOW-MAC..

Flame tip plugged.

Call GOW-MAC.

Loss of hydrogen or air.

Check hydrogen and air supplies.

Reestablish proper flow rates.

**Symptom**

Loss of hydrogen or air.  
(cont)

**Cause**

Sample contains more oxygen than combustion air, causing flashback.

**Remedy**

Dilute sample with inert gas, or use oxygen rather than air to support combustion.

## Section 12 Replacement Parts

When ordering replacement parts for your Series 580 FID GC, please specify the serial number of the instrument.

	<u><b>Description</b></u>	<u><b>Part No.</b></u>
Heaters (115 V)	Column oven heater 500 W	124-183
	Detector oven heater 60 W	124-152
	Injection port heater 60 W	124-152
Heaters (230 V)	Column oven heater 500 W	124-184
	Detector oven heater 60 W	124-153
	Injection port heater 60 W	124-153
Electronic Modules (115 V)	Temperature controller PCB	123-177
	Display/Switch Interface PCB	123-194
	Display	128-274
Electronic Modules (230 V)	Temperature Controller PCB	123-177-230
	Display/Switch Interface PCB	123-194
	Display	128-274
Mechanical Assemblies	Injection port assembly	069-86
	FID Detector assembly	12-580-N
	FID Detector assembly w/ flame-out option	12-580-NF
	Column adapter kit (for one column with 1/8" ends)	180-255
Electronic Parts and Controls	Zero potentiometer, 20K	111-178
	Receptacle, power switch w/ line filter (115/230 V)	129-152-10A
	Fuse, 10 A (115 V)	121-162
	Fuse, 5 A (230 V)	121-177
	Attenuator board assembly	123-175
	Power cord (115 V)	127-378
	Power cord (230 V)	127-407
	Blower motor kit: motor, wheel, fan blade	069-91
	Neon pilot light	127-329
	Knob	127-354
	Switch, fan	120-169
	Switch, attenuator	123-175
	Switch, range	120-128
Platinum sensor	124-175	

SERIES 580 FID GC REPLACEMENT PARTS LIST (cont)

	<u>Description</u>	<u>Part No.</u>
Miscellaneous	Injection port nut	176-125
	Metering valve	180-119
	Septa, 9 mm silicon	180-123S
	Septa, High temperature	180-278S
	Feet, rubber self adhesive	141-452
	Carrier flowmeter, He 0-65 cc/min @ 40 psig	180-163
	Sample flowmeter, Air 0-130 cc/min @ STP	180-216
	Hydrogen Flowmeter w/valve	180-136
	Air Flowmeter w/valve	180-138
	Recorder Cable, 6'	141-354
	Rotameter Bank (He, Air, H <sub>2</sub> )	75-300-HE
	Rotameter Bank (N <sub>2</sub> , Air, H <sub>2</sub> )	75-300-N2
	Capillary column adapter	180-966-2

# Section 13

## Drawings and Schematics

Flow Diagram

Wiring Schematic





# Health and Safety Declaration for the Return of GOW-MAC Instrument Co. Equipment

In order to protect our employees from exposure to various hazards, the following statements and/or questions **MUST** be answered by you. Fill out this document in its entirety and either fax or e-mail it to GOW-MAC Instrument Co., Attn: Repair Dept, **BEFORE** returning the product.

The instrument/device/part being returned **will not** be accepted into GOW-MAC's facility until we receive this completed document. Once the product has been approved for return by our Chemical Safety Officer, an acknowledgement will be promptly issued to you with notification of your **Return Materials Authorization (RMA) number** and the procedure to follow for returning the product. *All applicable regulations should be followed when returning instrumentation, devices, and or parts.*

**Customer to Record the Following:**

Model # / Part #: \_\_\_\_\_

Serial #: \_\_\_\_\_

Service Technician spoken to: \_\_\_\_\_

Today's Date: \_\_\_\_\_

***If this form is not approved by our chemical safety officer, the instrument/device/part WILL NOT be permitted into our facility for servicing!***

A) Briefly list the application(s) for which the instrument/device/part was used, as well as any and all chemicals, gases, and/or materials analyzed and their concentrations. (**MUST** be filled in): \_\_\_\_\_

B) Is there the possibility of internal or external contamination on or in this instrument/device/part?

- Yes – see below     No – proceed to C.

*Please check the appropriate box.*

- Chemicals or Substances That Are Hazardous to Health
- Blood, Body Fluids, (e.g. Urine, Secretions), Pathological Specimens
- Regulated Medical Wastes
- Infectious Substances or other Bio-Agents (e.g. Protein, Enzymes, Antibodies)
- Radioactive Isotopes used in the area. Detail type (ECD, Isotopic Labels, etc) and Activity in Micro Curies
- Biodegradable Material That Could Become Hazardous
- Other Hazards \_\_\_\_\_

***If any of the above boxes are checked the following statements and/or questions must be answered.***

1. Specifically describe where (on or in) the instrument/device/part there could be any residual contamination (for example: blood spill on the surface). \_\_\_\_\_
2. Provide details of these hazards. Include names, Material Safety Data Sheets (MSDS), and concentration of contaminants, where possible. \_\_\_\_\_
3. Describe the method of decontamination used. Attach Procedure. \_\_\_\_\_

C) I declare that the above information is true and complete to the best of my knowledge. I acknowledge that any inconsistencies between the condition of the instrument and the statements made on this form will delay the repair process.

Authorized signature \_\_\_\_\_ Date: \_\_\_\_\_

Name (Printed) \_\_\_\_\_ Phone number: \_\_\_\_\_

Company name: \_\_\_\_\_ Fax number: \_\_\_\_\_

Shipping address: \_\_\_\_\_

City: \_\_\_\_\_ State/Country: \_\_\_\_\_ Zip : \_\_\_\_\_

E-mail address: \_\_\_\_\_

**BEFORE** item can be shipped, fax completed form to: (610) 954-0599 or e-mail it to: [repairs@gow-mac.com](mailto:repairs@gow-mac.com)

<p><b>For GOW-MAC Use Only:</b></p> <p><input type="checkbox"/> Passed Safety Inspection. <b>OK</b> to proceed to Repair Dept.</p> <p><input type="checkbox"/> Failed Safety Inspection. <b>DO NOT</b> proceed to Repair Dept.</p>	<p>Signed: _____</p> <p>Chem. Safety Off. _____</p> <p>RMA No: _____</p>	<p>Date ____/____/____</p> <p>Comments: ( ) None</p> <p>( ) On Back &gt;&gt;&gt;&gt;</p>
--	--	--



